



**7 Cookson Close, Telford, TF2 8SZ**

**Price £339,995**

We are excited to offer this larger than average four bedroom detached house which occupies a great location within this established area of Muxton. Key benefits include a large kitchen diner, two additional reception rooms, four generous bedrooms and an integral garage.

### **Hallway**

Entering through a black UPVC doorway into a hallway with wooden flooring and giving access to all ground floor accommodation and staircase, with under stairs storage.

### **WC**

Wooden flooring continues through, white low level flush WC and sink with tiled splashback.

### **Lounge**

Generous sized living room with large bay UPVC window overlooking the front of the property, cream carpeted, two radiators, white wood effect double doors through to the dining room.

### **Kitchen Diner**

Modern cream high gloss wall and base units covered by laminate wood effect countertops, integrated NEFF double oven and hob with overhead extractor, garden facing window over integrated one and a half sink and drainer, plumbing for further appliances, tiled floor dining area with French doors to rear garden and patio.

### **Utility**

Gloss units and countertops to match the kitchen, integrated appliances with plumbing for additional appliances, access to the garden via side door.

### **Dining Room**

Cozy room off the lounge with views to the back garden through a large UPVC window.

### **Landing**

Spacious area leading to all bedrooms and family bathroom, airing cupboard and loft access.

### **Master Bedroom**

A front elevation, high-ceilinged double room with en-suite, UPVC window, radiator.

### **En-Suite**

White low level flush WC and sink, tiled shower cubicle with chrome shower, radiator and window.

### **Bedroom Two**

Good size double room, front facing UPVC window, radiator.

### **Bedroom Three**

Rear elevation double room with large UPVC window, radiator.

### **Bedroom Four**

Rear elevation single room, UPVC window, radiator.

### **Bathroom**

Generous size bathroom with partially tiled walls and laminate flooring, white low level flush WC, sink and bath.

### **Garden**

Enclosed rear garden with patio area, small grass area at the front.

### **Driveway**

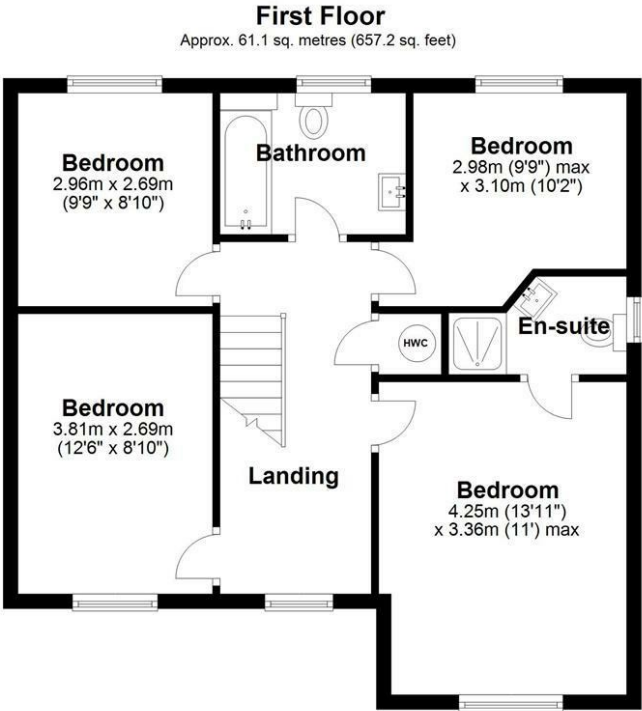
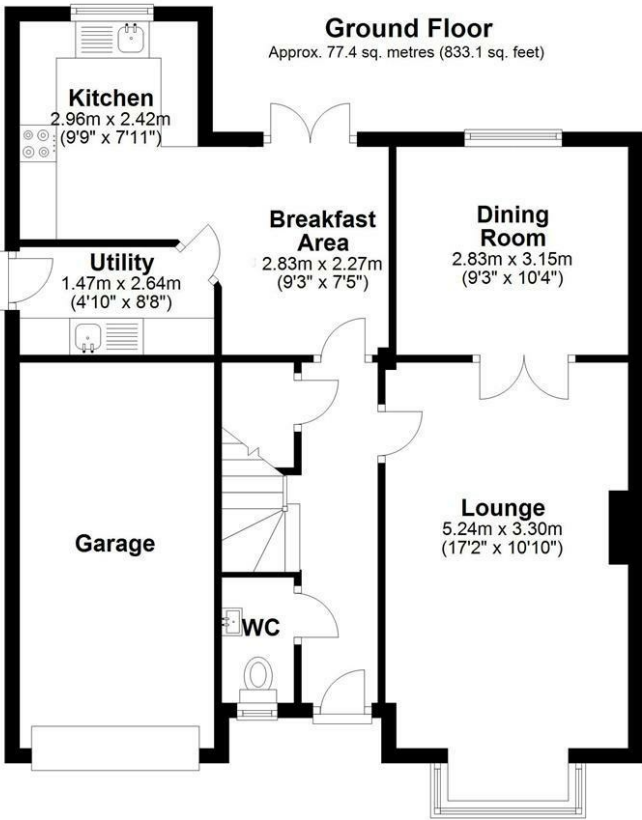
Paved driveway with space for two cars.

### **Garage**

Single garage with plenty of storage inside.

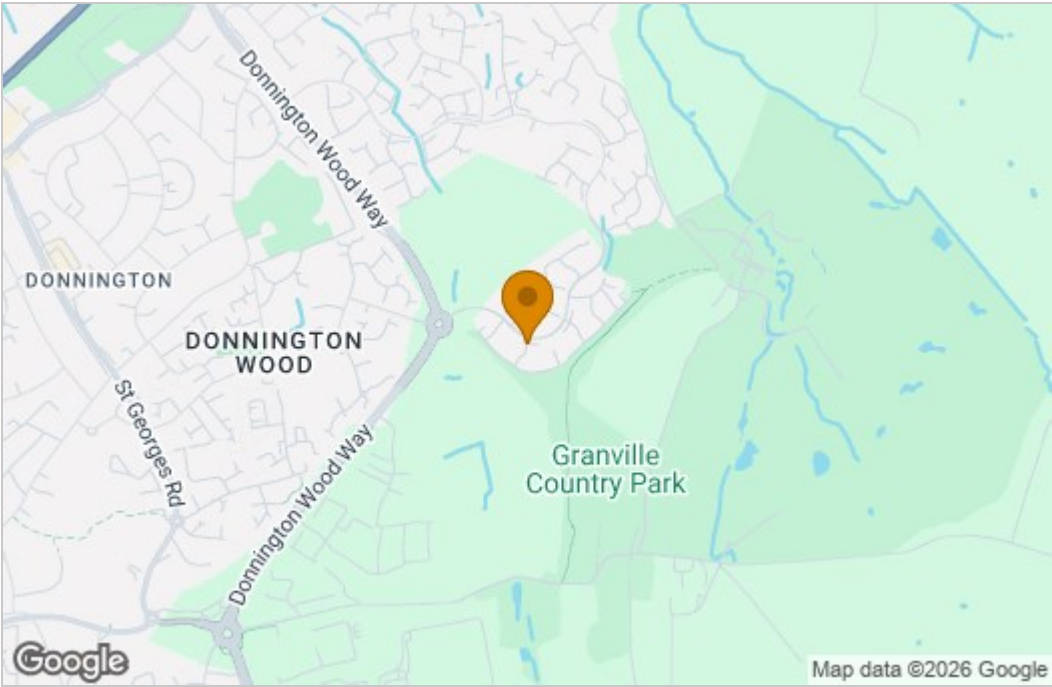


Floor Plan

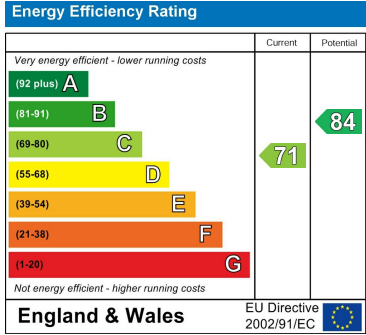


Total area: approx. 138.5 sq. metres (1490.4 sq. feet)

Area Map



Energy Efficiency Graph



These particulars, whilst believed to be accurate are set out as a general outline only for guidance and do not constitute any part of an offer or contract. Intending purchasers should not rely on them as statements of representation of fact, but must satisfy themselves by inspection or otherwise as to their accuracy. No person in this firms employment has the authority to make or give any representation or warranty in respect of the property.